

ISCOM2600 Series switches

The ISCOM2600 series switches are the new-generation, environmental-friendly, and energy-saving Ethernet switches independently developed by Raisecom, which can provide GE access and 10GE uplink interfaces. Based on the high-performance hardware platform and Raisecom new-generation switching software platform, the ISCOM2600 series switches provide multiple features, such as flexible networking, various security control, and easy management and meanwhile support mature IPv6 and intelligent PoE management. This series can be widely applied to multiple scenarios, such as enterprise park access and GE to desktop.



ISCOM2600-12X(-PWR)



ISCOM2600-28X(-PWR / PWH)



ISCOM2600-54X-HI

Highlights >>

Flexible Ethernet networking

In addition to traditional STP/RSTP/MSTP spanning tree protocol, the ISCOM2600 series switches also support the latest Ethernet Ring Protection Switching (ERPS) standard in the industry, which applies to various ring network topologies, such as single ring, tangent ring, and intersecting ring, and can provide sub-50ms protection switching to achieve carrier-grade reliability.

Support interface backup dual-homed protection, manual and static LACP to implement uplink backup, greatly improving reliability of access-side devices.

Support loop detection, automatic loop detection and loop elimination, to ensure stable operation of the network.

Various security control

Directly discard the illegal packets which mismatch the binding entries by establishing and maintaining the DHCP Snooping table. Ensure legality of DHCP server based on the feature of DHCP Snooping trusting interface.

Support multiple access control and user authentication technologies, such as dynamic ARP inspection, dot1x, RADIUS, TACACS+, IP Source Guard, and secure MAC, improving security of the network and devices.

Support abundant ACL security strategies based on source MAC address and destination MAC address, source IP address and destination IP address, source interface and destination interface, or protocol.

Support broadcast storm control, enhancing network security.

Easy maintenance and management

Support various management modes, such as SNMPv1/v2c/v3, Raisecom NMS, CLI, Web network management, Telnet, in-band management, and out-of-band management, which facilitate maintenance; support multiple encryption methods, such as SSH2.0, which make management more secure; support RMON and interface traffic statistics which, which facilitate network optimization and

International Headquarters

Raisecom Building, East-11, No.10 Xibeiwang East Road,
Haidian District, Beijing, P.R.China, 100193
Tel: +86 10 8288 3305
Fax: +86 10 8288 3056
www.raisecom.com

U.S.A. Headquarters

Address: 3031 N. Rocky Point Drive West Suite 100
Tampa, Florida 33607 USA
Tel: 1-888-816-4808
Email: sales@raisecominc.com

Raisecom Technology Co., Ltd.

Copyright@1999-2018
All rights reserved
Technical information is subjected to
change without notice



reconstruction.

Support MAC-based VLAN partitions, which is a good solution to the smart and flexible management of mobile offices.

The power interface on some models of the ISCOM2600 series switches is on the front panel, which simplifies the operation and maintenance (single-sided) of the entire device.

Support IPv6 management and authentication function, thus applicable to management in the IPv6 network management environment.

Support local port mirroring, RSPAN remote mirroring, and traffic mirroring, thus facilitating extraction and analysis of network traffic and taking measures accordingly.

Comply with IEEE 802.3af、IEEE 802.3at and IEEE802.3bt standards. The interface can supply up to 30 W power(90W on PWH model).

Be compatible to PDs and provide forcible power supply mode for non-standard PDs.

Support intelligent PoE management, including enabling/disabling power supply to interfaces, configuring output power of interfaces, configuring priority of power supply, power overloading protection, over temperature protection.

Support intelligent PoE power supply, including periodic power supply, periodically restarting PDs, monitoring connection status of PDs, and restarting PDs upon disconnection.

Powerful and flexible PoE (for PoE models only)

Application scenarios >>

International Headquarters

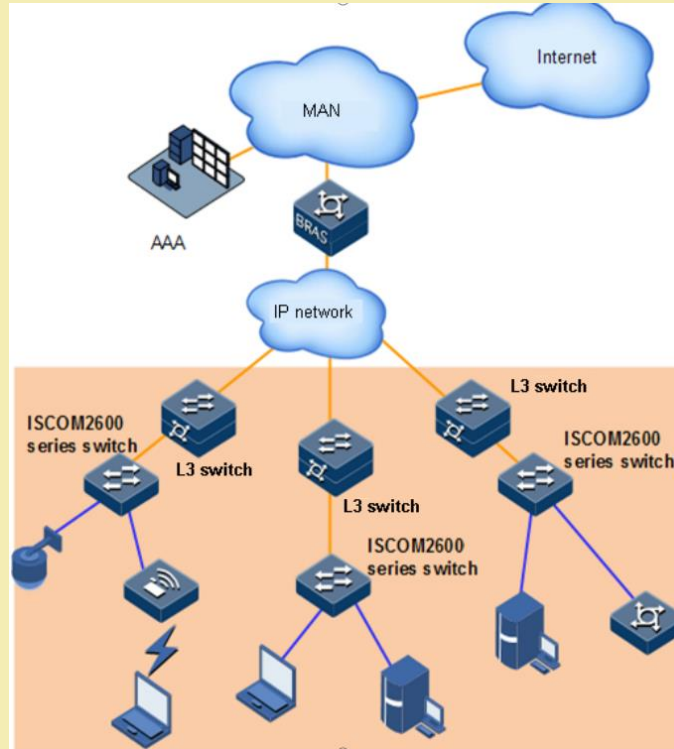
Raisecom Building, East-11, No.10 Xibeiwang East Road,
Haidian District, Beijing, P.R.China, 100193
Tel: +86 10 8288 3305
Fax: +86 10 8288 3056
www.raisecom.com

U.S.A. Headquarters

Address: 3031 N. Rocky Point Drive West Suite 100
Tampa, Florida 33607 USA
Tel: 1-888-816-4808
Email: sales@raisecominc.com

Raisecom Technology Co., Ltd.

Copyright@1999-2018
All rights reserved
Technical information is subjected to
change without notice



Enterprise park network access

In enterprise park access scenario, the ISCOM2600 series switches serve as the access devices and are connected upstream to the data devices in the enterprise/campus/residency and upstream to the L3 aggregation devices, accessing and transmitting the bandwidth, voice, Wi-Fi, and video services, thus meeting the users' requirements for high bandwidth and multi-service access.

Key features >>

Item	ISCOM2600-12G ISCOM2600-12X ISCOM2600-12X-PWR	ISCOM2600-28G ISCOM2600-28X ISCOM2600-28X-24F ISCOM2600-28X-PWR ISCOM2600-28X-PWH ISCOM2600-54X-HI
Interface	8 * 10/100/1000Base-TX GE electrical interfaces 4 * 10GE SFP+ interface (support 1G SFP) Or 4* 1GE SFP interface(for model: ISCOM2600-12G)	24 * 10/100/1000Base-TX GE electrical interfaces 4 * 10GE SFP+ interface (support 1G SFP) Or 4* 1GE SFP interface(for model: ISCOM2600-28G) 24 * 1GE SFP optical interfaces

International Headquarters

Raisecom Building, East-11, No.10 Xibeiwang East Road,
Haidian District, Beijing, P.R.China, 100193
Tel: +86 10 8288 3305
Fax: +86 10 8288 3056
www.raisecom.com

U.S.A. Headquarters

Address: 3031 N. Rocky Point Drive West Suite 100
Tampa, Florida 33607 USA
Tel: 1-888-816-4808
Email: sales@raisecominc.com

Raisecom Technology Co., Ltd.

Copyright@1999-2018
All rights reserved
Technical information is subjected to
change without notice



		4 * 10GE SFP+ interface (support 1G SFP) (for model: ISCOM2600-28X-24F)
		48 * 10/100/1000Base-TX GE electrical interfaces 6 * 10GE SFP+ interface (support 1G SFP) (for model: ISCOM2600-54X) PWR: port1-24 support IEEE802.3 at/af PWH: port1-8 support IEEE802.3 at/af/bt Port9-24 support IEEE802.3 at/af
Switching capacity	96 Gbit/s	128 Gbit/s 216 Gbit/s(for model: ISCOM2600-54X)
Packet forwarding rate	71.5 Mpps	95.3 Mpps 160.8 Mpps(for model: ISCOM2600-54X)
Dimensions (mm) (Width × Depth × Height)	<ul style="list-style-type: none"> ● ISCOM2600-12X : 260 × 130 × 43.6 ● ISCOM2600-12G : 260 × 130 × 43.6 ● ISCOM2600-12X-PWR : 300 × 220 × 43.6 ● ISCOM2600-28X : 440 × 220 × 43.6 ● ISCOM2600-28G : 440 × 220 × 43.6 ● ISCOM2600-28X-24F : 440 × 220 × 43.6 ● ISCOM2600-28X-PWR : 440 × 300 × 43.6 ● ISCOM2600-28X-PWH : 440 × 300 × 43.6 ● ISCOM2600-54X : 440 × 300 × 43.6 	
Management interface	<ul style="list-style-type: none"> ● 1 RJ45 Console interface ● 1 SNMP out-of-band management interface 	
MAC address table	<ul style="list-style-type: none"> ● 16K MAC addresses ● Automatic MAC address learning, MAC address aging, and static MAC address ● Static, dynamic, and blackhole MAC address entries ● MAC address limit based on interface or VLAN ● Managing MAC address flapping 	
VLAN	<ul style="list-style-type: none"> ● 4K VLANs ● MAC/protocol/IP subnet/interface-based VLAN ● Basic QinQ and selective QinQ ● VLAN mapping ● Private VLAN ● Voice VLAN 	
Jumbo frame	Supported, 9 Kbytes	

International Headquarters

Raisecom Building, East-11, No.10 Xibeiwang East Road,
Haidian District, Beijing, P.R.China, 100193
Tel: +86 10 8288 3305
Fax: +86 10 8288 3056
www.raisecom.com

U.S.A. Headquarters

Address: 3031 N. Rocky Point Drive West Suite 100
Tampa, Florida 33607 USA
Tel: 1-888-816-4808
Email: sales@raisecominc.com

Raisecom Technology Co., Ltd.

Copyright@1999-2018
All rights reserved
Technical information is subjected to
change without notice



Ring network protection	<ul style="list-style-type: none">● ERPS (G.8032)● STP/RSTP/MSTP● BPDU Guard and root Guard● Loop detection
Reliability	<ul style="list-style-type: none">● Manual aggregation, static LACP● Interface backup● Ethernet OAM 802.3ah
IP routing	IPv4 and IPv6 static routes
IPv6	<ul style="list-style-type: none">● IPv6 Ping, IPv6 Tracert, IPv6 Telnet, and IPv6 FTP/TFTP/SFTP● IPv6 SNMP and Raisecom NView NNM IPv6 network management● IPv6 RADIUS, IPv6 TACACS+, IPv6 NTP and SNTP● IPv6 ACL● ND● IPv6 IP Source Guard● DHCPv6 Snooping, and DHCPv6 Client
Multicast	<ul style="list-style-type: none">● IGMPv1/v2/v3 Snooping and immediate leave● Interface/user-based immediate leave● Static multicast group● IGMP MVR● MLDv1/v2 Snooping● IGMP filter● IGMP Proxy
DHCP	<ul style="list-style-type: none">● DHCP Client● DHCP Snooping● DHCP Relay● DHCP Server and Option 43● DHCP Snooping Option 61/82 and DHCP Relay Option 82
Mirroring	<ul style="list-style-type: none">● Traffic mirroring● Local and remote port mirroring

International Headquarters

Raisecom Building, East-11, No.10 Xibeiwang East Road,
Haidian District, Beijing, P.R.China, 100193
Tel: +86 10 8288 3305
Fax: +86 10 8288 3056
www.raisecom.com

U.S.A. Headquarters

Address: 3031 N. Rocky Point Drive West Suite 100
Tampa, Florida 33607 USA
Tel: 1-888-816-4808
Email: sales@raisecominc.com

Raisecom Technology Co., Ltd.

Copyright@1999-2018
All rights reserved
Technical information is subjected to
change without notice



- QoS/ACL**
- Rate limiting in the ingress direction and egress direction of the interface
 - 8 queues for each interface
 - SP, WRR, DRR, SP+WRR, and SP+DRR
 - Packet redirection
 - 802.1p and DSCP priority remarking for packets
 - Interface-based traffic monitoring and dual-rate three-color CAR
 - L2–L4 packet filtering based on source MAC address and destination MAC address, source IP address, destination IP address, TCP/UDP source/destination interface ID, protocol, and VLAN
 - Hierarchy-CAR

- Security**
- Hierarchical user management and password protection
 - 802.1x authentication based on interface and MAC address
 - CPU protection and anti-ARP attack
 - Binding combinations of the IP address, MAC address, interface, and VLAN
 - Blackhole MAC address
 - MAC address limit
 - AAA, RADIUS, and TACACS+
 - Interface isolation
 - Port security MAC
 - SSHv2.0
 - SFTP
 - HTTPS
 - DHCP Snooping and DHCP server which prevents against spoofing
 - Dynamic ARP inspection, preventing MITM attacks and ARP DoS attacks
 - BPDU Guard and root Guard

- Management and maintenance**
- Support ISF, 2 units.
 - Management through the Console interface and out-of-band interface
 - SNMPv1/v2c/v3 and various management modes, such as CLI, Web, Telnet, and SSHv2.0
 - Raisecom NView NNM system
 - RMON
 - LLDP/LLDP-MED
 - Syslog and hierarchical alarms
 - Ping and Tracert
 - Dying Gasp alarm
 - NTP and SNTP
 - PTP-TC(support for ports of 1G RJ45)
 - Virtual cable test
 - Interface loopback
 - Interface loop detection

International Headquarters

Raisecom Building, East-11, No.10 Xibeiwang East Road,
Haidian District, Beijing, P.R.China, 100193
Tel: +86 10 8288 3305
Fax: +86 10 8288 3056
www.raisecom.com

U.S.A. Headquarters

Address: 3031 N. Rocky Point Drive West Suite 100
Tampa, Florida 33607 USA
Tel: 1-888-816-4808
Email: sales@raisecominc.com

Raisecom Technology Co., Ltd.

Copyright@1999-2018
All rights reserved
Technical information is subjected to
change without notice



- Optical module DDM
- Link-state tracking
- Dual systems

PoE (for PoE models only)

- PWR: IEEE802.3af/802.3at-compliant, up to 30 W power for the interface
- PWH: IEEE802.3af/802.3at/802.3bt-compliant, up to 90 W power for the interface
- Forcible power supply mode for non-standard PDs
- PoE power management, such as enabling/disabling power supply to interfaces, interface output power configuration, priority of power supply configuration, power overloading protection, and overtemperature protection
- PoE timed power supply, periodical restart of PDs, PD connection monitoring, and restarting PDs upon disconnection.

Lightning protection

Interface lightning protection: 6 kV

Input voltage

- AC power: 220 VAC, 100–240 VAC, 50–60 Hz
- DC power: -48 VDC, -36 to -72 VDC

Maximum power consumption

- ISCOM2600-12X: 15 W
- ISCOM2600-12G: 13 W
- ISCOM2600-12X-PWR: 150 W (Switch 26W, PoE: 124 W) for AC model
Switch 13W, PoE: 240 W for DC model
- ISCOM2600-28X: 20 W
- ISCOM2600-28G: 18 W
- ISCOM2600-28X-PWR, ISCOM2600-28X-PWH: 550 W (Switch40W, PoE: 510 W) for AC model
Switch 13W, PoE: 720 W for DC model
- ISCOM2600-28X-24F:31 W
- ISCOM2600-54X-HI: 45 W

Energy saving and environmental protection

- Support IEEE802.3az energy conservation.
- The PWR models and ISCOM2648G-4C support smart adjustment of fan speed by temperature. Other models adopt a fanless and silent design.
- The ISCOM2608G-2GE-PWR (A) support smart adjustment of fan speed by temperature while the ISCOM2608G-2GE-PWR (R) adopts a fanless and silent design.

Environment requirements

- Operating temperature: 0–50°C
- Relative humidity: 5%–90% (non-condensing)

Ordering information >>

Product model

ISCOM2600-12G-AC

ISCOM2600-12G-DC

Description

8 * 10/100/1000 Mbit/s Ethernet electrical interfaces

4 * 1GE SFP optical interfaces(support 1000 Mbit/s SFP optical modules)
single AC or DC power supply

International Headquarters

Raisecom Building, East-11, No.10 Xibeiwang East Road,
Haidian District, Beijing, P.R.China, 100193
Tel: +86 10 8288 3305
Fax: +86 10 8288 3056
www.raisecom.com

U.S.A. Headquarters

Address: 3031 N. Rocky Point Drive West Suite 100
Tampa, Florida 33607 USA
Tel: 1-888-816-4808
Email: sales@raisecominc.com

Raisecom Technology Co., Ltd.

Copyright@1999-2018
All rights reserved
Technical information is subjected to
change without notice



ISCOM2600-12X-AC ISCOM2600-12X-DC	8 * 10/100/1000 Mbit/s Ethernet electrical interfaces 4 * 10GE SFP+ optical interfaces(support 1000 Mbit/s SFP or 10 Gbit/s SFP+ optical modules) single AC or DC power supply
ISCOM2600-12X-PWR-AC ISCOM2600-12X-PWR-DC	8 * 10/100/1000 Mbit/s Ethernet electrical interfaces (IEEE 802.3af/802.3at-compliant) 4 * 10000 Mbit/s SFP+ optical interfaces (support 1000 Mbit/s SFP optical modules) single AC or DC power supply
ISCOM2600-28G-AC ISCOM2600-28G-DC	24 * 10/100/1000 Mbit/s Ethernet electrical interfaces 4 * 1GE SFP optical interfaces (support 1000 Mbit/s SFP optical modules) Single AC or DC power supply
ISCOM2600-28X-AC ISCOM2600-28X-DC	24 * 10/100/1000 Mbit/s Ethernet electrical interfaces 4 * 10GE SFP+ optical interfaces (support 1000 Mbit/s SFP or 10 Gbit/s SFP+ optical modules) Single AC or DC power supply
ISCOM2600-28X-24F-AC/D ISCOM2600-28X-24F-AC/S ISCOM2600-28X-24F-DC/D ISCOM2600-28X-24F-AC_DC ISCOM2600-28X-PWR-AC/D ISCOM2600-28X-PWR-AC/S ISCOM2600-28X-PWR-DC/D	24 * 1GE SFP optical interfaces 4 * 10GE SFP+ optical interfaces (support 1000 Mbit/s SFP or 10 Gbit/s SFP+ optical modules) Single/Double AC,Double DC or AC_DC power supply 24 * 10/100/1000 Mbit/s Ethernet electrical interfaces(IEEE 802.3af/802.3at-compliant) 4 * 10GE SFP+ optical interfaces (support 1000 Mbit/s SFP or 10 Gbit/s SFP+ optical modules)
ISCOM2600-28X-PWR-AC_DC	Single/Double AC,Double DC or AC_DC power supply
ISCOM2600-28X-PWH-AC/D ISCOM2600-28X-PWH-AC/S ISCOM2600-28X-PWH-DC/D ISCOM2600-28X-PWH-AC_DC	24 * 10/100/1000 Mbit/s Ethernet electrical interfaces(IEEE 802.3af/802.3at/802.3bt-compliant) 4 * 10GE SFP+ optical interfaces (support 1000 Mbit/s SFP or 10 Gbit/s SFP+ optical modules) Single/Double AC,Double DC or AC_DC power supply *only Port1-8 support IEEE802.3bt
ISCOM2600-54X-HI-AC/D ISCOM2600-54X-HI-DC/D ISCOM2600-54X-HI-AC/S ISCOM2600-54X-HI-AC_DC	48 * 10/100/1000 Mbit/s Ethernet electrical interfaces(IEEE 802.3af/802.3at-compliant) 6* 10GE SFP+ optical interfaces (support 1000 Mbit/s SFP or 10 Gbit/s SFP+ optical modules) Single/Double AC,Double DC or AC_DC power supply

International Headquarters

Raisecom Building, East-11, No.10 Xibeiwang East Road,
Haidian District, Beijing, P.R.China, 100193
Tel: +86 10 8288 3305
Fax: +86 10 8288 3056
www.raisecom.com

U.S.A. Headquarters

Address: 3031 N. Rocky Point Drive West Suite 100
Tampa, Florida 33607 USA
Tel: 1-888-816-4808
Email: sales@raisecominc.com

Raisecom Technology Co., Ltd.

Copyright@1999-2018
All rights reserved
Technical information is subjected to
change without notice