



ISCOM HT806G-WX

The ISCOM HT806G-WX is a 10G GPON HGU ONT. It offers 1 XG-PON uplink interface, 4 GE downlink interfaces, 1 FXS interface, 1 USB interface and supports dual-frequency WLAN. It can not only meet the requirements of users for high bandwidth access and multi-service convergence, but also has cloud access and VPN tunnel capabilities. ISCOM HT806G-WX adopts dual-core CPU technology, integrates data, voice, security, wireless and other functions, and can provide users with a comprehensive network access solution for gigabit access, widely used in the FTTH network.

ISCOM HT806G-WX

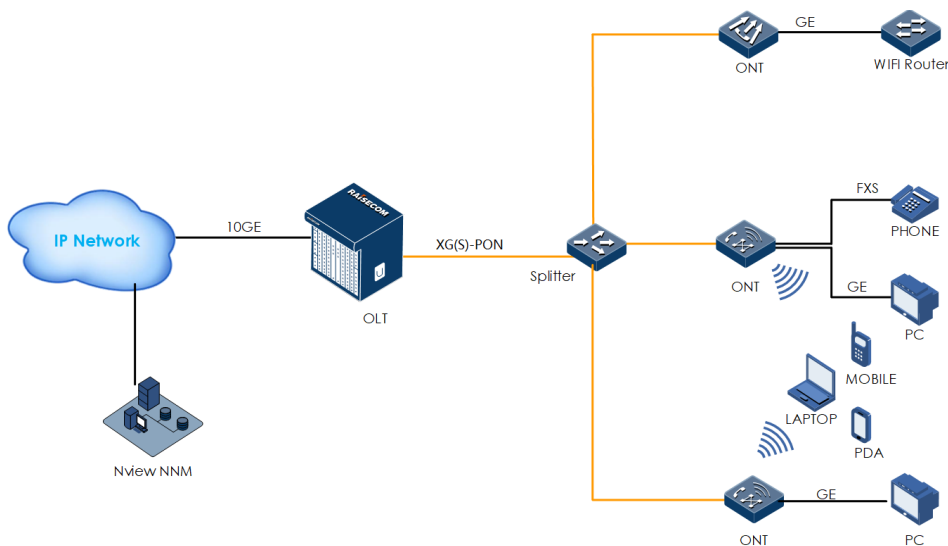


Highlights >>

- Elegant appearance** Plastic shell, low overall power consumption, and good heat dissipation
- Multiple service with gigabit access** Integrating XG-PON ONU, WLAN AP, IAD, LAN switch, and router into one, providing users with integrated access services of data and video
- Dual-frequency WIFI 6** 2.4G&5G dual-frequency WIFI6 with maximum theoretical bandwidth 1,800Mbps and easy mesh provide better user experiences

Application >>

Figure.1 Applied in FTTH network offer wide service access





Key Features >>

XG-PON interface

- SC/APC, Class N1/N2a
- Transmission rate: uplink 2.5 Gbit/s and downlink 10 Gbit/s
- Central wavelength: uplink 1270 nm and downlink 1577 nm
- Maximum Rx sensitivity: -28 dBm
- Authentication: SN/Password/SN+Password
- Support DBA
- XGEM Port and T-CONT flexible mapping

GE interface

- 10/100/1000Base-T RJ-45 Ethernet interface
- Ethernet interface auto-negotiation or manual configuration
- MDI/MDIX auto-detection

Voice interface

- DTMF dialup
- SIP, H.248 and IMS-SIP
- Multiple coding schemes: G.711 (μ -law and A-law), G.729 (A and B), G.726
- Multiple classified services, such as CID, call waiting, call forwarding, call transfer, call switching, three-way calling and classified ringing
- T.38 fax

WLAN interface

- IEEE802.11 b/g/n/ac/ax
- 2.4GHz&5GHz dual band
- MIMO: 2x2 2.4GHz & 2x2 5GHz
- Multiple SSIDs
- WIFI encryption: 64-bit and 128-bit WEP, AES, TKIP, and TKIP-AES
- WIFI authentication: WPA-PSK and SPA2-PSK
- Easy Mesh

Multicast

- IGMP v1/v2
- IGMP Snooping v1/ v2 and fast leave
- IGMP Proxy

QoS

- Priority mapping and traffic supervision (CAR)
- Traffic shaping
- Congestion management and priority management

VPN

L2TP/PPTP VPN

DHCP

DHCP server and DHCP client

PPPoE

PPPoE client

Security

- Firewall
- MAC address filter

International Headquarters

Raisecom Building, East-11, No.10 Xibeiwang East Road,
Haidian District, Beijing, P.R.China, 100193

Tel: +86 10 8288 3305

Fax: +86 10 8288 3056

www.raisecom.com

U.S.A. Headquarters

Address: 3031 N. Rocky Point Drive West Suite 100
Tampa, Florida 33607 USA

Tel: 1-888-816-4808

Email: sales@raisecominc.com

Raisecom Technology Co., Ltd.

Copyright@1999-2018

All rights reserved

Technical information is subjected to
change without notice



- ACL
- Anti ARP attack and anti DDOS attack
- Network diagnosis: PING and traceroute
- Managed via OMCI, TR069 and web
- Interface Up/Down alarms and Dying Gasp
- Information query of optical modules
- Query of memory and CPU utilization rate

Maintenance and Management

Specifications >>

Physical Interface	Uplink: 1 XG-PON CLASS N1/N2a- SC/PC Downlink: 4 GE (RJ45)+ 1 FXS (RJ11)+1 USB 2.0 + 2.4G&5G dual-frequency WLAN
Power Adapter	Input: 100–240 VAC (50/60 Hz) Output: 12 VDC
Power consumption	Full load: <24W
User Conditions	Operating temp: 0~45°C Storage temp: -25~70°C Humidity: 10~90% non-condensing
Dimensions	184 (L) × 129 (W) × 38 (H) mm3
Weight	≤ 0.5Kg

Compliances >>

Standards & protocols	ITU-T G.987 G.711, G.729, G.723.1 T.38 RFC3261 RFC3550/3551 RFC 3261, RFC2543 RFC3550/3551 IEEE802.11 b/g/n/ac/ax IGMP v1/v2 CE compliance, EMC Class B
-----------------------	--

Ordering Information >>

ISCOM HT806G-WX	XG-PON ONT with 1 XG-PON uplink (SC/APC), 4 GE, 1 FXS, 1 USB 2.0, Dual band 802.11b/g/n/ac/ax (MIMO 2*2) WLAN * The ONT can be ordered with European and American power adaptor
------------------------	--

International Headquarters

Raisecom Building, East-11, No.10 Xibeiwang East Road,
Haidian District, Beijing, P.R.China, 100193
Tel: +86 10 8288 3305
Fax: +86 10 8288 3056
www.raisecom.com

U.S.A. Headquarters

Address: 3031 N. Rocky Point Drive West Suite 100
Tampa, Florida 33607 USA
Tel: 1-888-816-4808
Email: sales@raisecominc.com

Raisecom Technology Co., Ltd.

Copyright@1999-2018
All rights reserved
Technical information is subjected to
change without notice