



RAX721-C Series

With the constantly rising of user bandwidth, operators also put forward higher demands for the port bandwidth and performance of aggregator.

Raisecom RAX721-C series are next-generation carrier-class pre-aggregation and aggregation products that provide high performance, high reliability and high densities 1GE, 10GE, 40GE and 100GE port types in a compact standard 1U enclosure, flexibly adapting to diversified operator's network bandwidth requirements. They support rich Layer 2 and Layer 3 features, with advanced QoS features, customers' services at different levels can be flexibly and finely scheduled, and support various VPN services over IP/MPLS networks, to implement services isolation through network virtualization, greatly improved network capacity and utilization, and help customers build a powerful next-generation packet transport network.



RAX721-C-2C24

Highlights >>

Power Reliability	Dual hot-swappable power supplies with voltage/temperature monitoring
Flexible Service Delivery	Standard CE2.0 service (E-Line, E-LAN, E-Tree, E-Access) delivery VPWS, VPLS, H-VPLS, MS-PW, L3VPN, 6PE/6VPE over MPLS EVPN over MPLS/SR on roadmap* Flexible traffic classification guarantees customer-defined service SLA
Multicast	Full set of multicast routing and control protocols implemented for flexible multiple service access and aggregation
Committed Network Resiliency	Protection mechanism including STP/RSTP/MSTP, switchport backup, IEEE802.1ax Link Aggregation, MC-LAG, ITU-T G.8032 ERPS, Static/dynamic IP FRR, TE/LDP/VPN/EVPN* FRR, VRRP, MPLS PW redundancy, MPLS TE hot-standby* guarantee network resiliency in chain, star, mesh, dual-homing and ring topologies
OAM & Hardware-based SLA	Hardware-based IEEE802.1ag/ITU-T Y.1731 end-to-end CFM (CCM interval 3.3ms), hardware-based ITU-T Y.1731 end-to-end SLA performance monitoring with test result showing on user-friendly GUI BFD helps customer achieve fast fault detection for dynamic IP services and MPLS services
IPv4/v6 Dual-Stack	IPv6 for management and services 6PE/6VPE support helps customers plan their future network evolution

* Features that will be available in future release

International Headquarters

Raisecom Building, East-11, No.10 Xibeiwang East Road,
Haidian District, Beijing, P.R.China, 100193

Tel: +86 10 8288 3305

Fax: +86 10 8288 3056

www.raisecom.com

U.S.A. Headquarters

Address: 6380 N Eldridge Pkwy, Houston,
TX 77041, USA

Tel: 1-888-816-4808

Email: sales@raisecominc.com

Raisecom Technology Co., Ltd.

Copyright@1999-2018

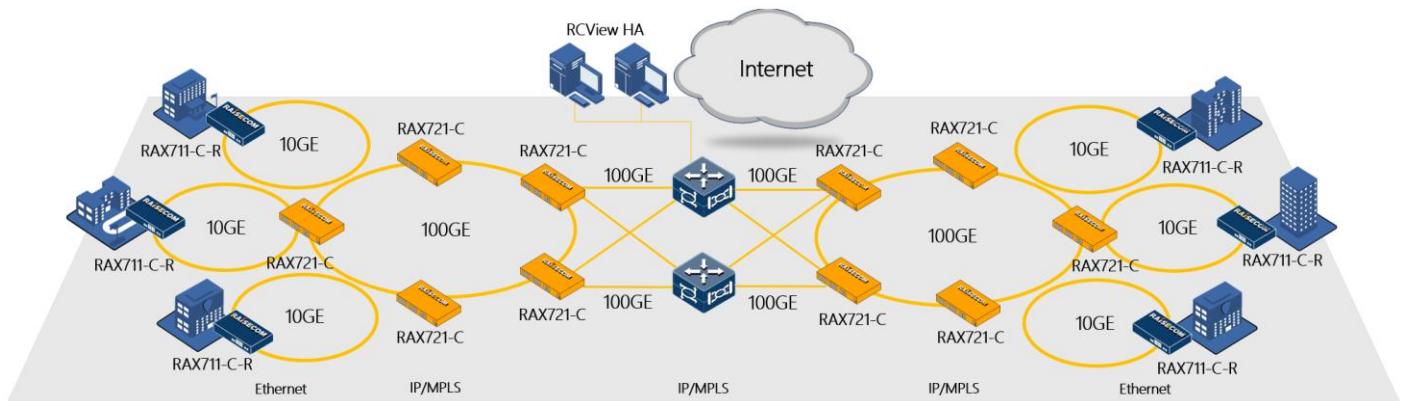
All rights reserved

Technical information is subjected to
change without notice

Application >>

Metro Ethernet Pre-aggregation and Aggregation

RAX721-C series working with Raisecom intelligent CPE RAX711 series can deliver high-capacity 1GE/10GE/40GE/100GE diversified metro ethernet pre-aggregation and aggregation. support complete standard CE2.0 E-Line, E-LAN, E-Tree and E-Access services, as well as VPWS, VPLS, H-VPLS, MS-PW, and BGP L3VPN services over MPLS, 6PE, 6VPE over MPLS, EVPN* over SR MPLS and EVPN* over SRv6* as a PE device. The service delivery can be very flexible and reliable. ZTP and hardware-based CFM and SLA offer service providers an easier way to deploy and manage either devices or services. Various fault detection and protection mechanisms guarantee high availability and stability of services. The whole solution is simply and completely managed on brand new B/S structured RCView system.



Key Features >>

Ethernet Service

- MAC address table: 32K
- Jumbo frame up to 12288 Bytes
- 4,094 VLANs, IEEE802.1Q VLAN, IEEE802.1ad QinQ
- Layer 2 control protocol (L2CP) handling
- Super VLAN
- Private VLAN (PVLAN) with primary, community and isolated type

IP Service

- IPv4/v6 static routing
- RIPv1/v2/ng, OSPFv2/v3, ISISv4/v6 and BGP4/4+
- PMTU IPv4/v6
- VRF Lite IPv4/v6
- DHCPv4/v6* server, client, relay, snooping

International Headquarters

Raisecom Building, East-11, No.10 Xibeiwang East Road,
Haidian District, Beijing, P.R.China, 100193
Tel: +86 10 8288 3305
Fax: +86 10 8288 3056
www.raisecom.com

U.S.A. Headquarters

Address: 6380 N Eldridge Pkwy, Houston,
TX 77041, USA
Tel: 1-888-816-4808
Email: sales@raisecominc.com

Raisecom Technology Co., Ltd.

Copyright@1999-2018
All rights reserved
Technical information is subjected to
change without notice



MPLS Service	<ul style="list-style-type: none">• MPLS L2VPN: VPWS, VPLS, H-VPLS, MS-PW• MPLS L3VPN• MPLS EVPN*• 6PE/6VPE• Inter-AS MPLS L2VPN Option A, C• Inter-AS MPLS L3VPN Option A, C• Static CR-LSP, LDP, CSPF, RSVP-TE, tunnel policy
Multicast	<ul style="list-style-type: none">• IGMP v1, v2, v3• IGMP Snooping, MVR, VLAN copy, Proxy• MLD v1, v2*• MLD Snooping*• PIM-SM and PIM-SSM IPv4/v6*
QoS	<ul style="list-style-type: none">• Flexible Traffic classification base on MAC, IP, Port, VLAN, CoS, DSCP, etc.• Traffic policing• Hierarchical CAR• 8 local priority, 8 queues per port• WRED• Traffic shaping per queue/port• SP/WRR/SP+WRR queue scheduling
Reliability	<ul style="list-style-type: none">• IEEE802.1ax Link aggregation group, manual, LACP• Switchport backup• STP, RSTP, MSTP, MRSTP• ITU-T G.8032 ERPS based on port or CFM, switchover time less than 50ms• Loop detection• Ethernet fault propagation, MPLS PW fault propagation• ULDP• IPv4/v6 ECMP• Static/dynamic IPv4/v6 FRR, TE/LDP/VPN FRR• VRRP• MPLS PW redundancy, MPLS TE hot-standby*
OAM	<ul style="list-style-type: none">• IEEE 802.3ah EFM-OAM• IEEE 802.1ag/ITU-T Y.1731 CFM• ITU-T Y.1731 performance monitoring (LM, DM) for Ethernet and MPLS L2VPN• TWAMP-Lite for Ethernet, IP, MPLS L3VPN, 6PE/6VPE*• SAT: RFC2544, Y.1564• MPLS ping and traceroute• BFD for interface, static routing, RIP, OSPF, ISIS, BGP, LDP, LSP, CR-LSP*, PW, MS-PW*, VRRP, FRR, PIM*• Dying Gasp in case of power failure

International Headquarters

Raisecom Building, East-11, No.10 Xibeiwang East Road,
Haidian District, Beijing, P.R.China, 100193

Tel: +86 10 8288 3305

Fax: +86 10 8288 3056

www.raisecom.com

U.S.A. Headquarters

Address: 6380 N Eldridge Pkwy, Houston,
TX 77041, USA

Tel: 1-888-816-4808

Email: sales@raisecominc.com

Raisecom Technology Co., Ltd.

Copyright@1999-2018

All rights reserved

Technical information is subjected to
change without notice



- Security**
- CPU CAR
 - CPU anti-attack
 - DHCPv4/v6 Snooping
 - ARP filter, DAI
 - IPv4/v6* IPSP
 - DOT1X
 - ACL based on VLAN, CoS, MAC, EtherType, IP or user-define
 - RADIUS, TACACS+
 - Storm control (broadcast, multicast, DLF)
 - Port-security MAC

- Maintenance and Management**
- Zero-Touch Provisioning
 - SNMP v1/v2/v3
 - Netconf, Telemetry*
 - CLI management by local CONSOLE, Telnet and SSHv2
 - KeepAlive, RMON, LLDP, Syslog
 - SFP digital diagnostic management (DDM)
 - CPU, memory monitoring
 - Voltage and temperature monitoring

- Synchronization**
- NTP, SNTP
 - IEEE1588v2 TC*
 - SyncE*

* Features that will be available in future release

Model Comparison >>

Model	RAX721-C-2C24	RAX721-CL-2C24
Switching capacity	320Gbps	320Gbps
Interface	2 x 100G/40G QSFP28/QSFP+ 24 x 10G/1G SFP+/SFP	2 x 100G/40G QSFP28/QSFP+ 24 x 10G/1G SFP+/SFP
Power Supplies	2 hot-swappable AC/DC power supplies provide 1+1 redundancy AC:220V, 100~240VAC DC: -48V, -36~-72V	2 hot-swappable AC/DC power supplies provide 1+1 redundancy AC:220V, 100~240VAC DC: -48V, -36~-72V

International Headquarters

Raisecom Building, East-11, No.10 Xibeiwang East Road,
Haidian District, Beijing, P.R.China, 100193
Tel: +86 10 8288 3305
Fax: +86 10 8288 3056
www.raisecom.com

U.S.A. Headquarters

Address: 6380 N Eldridge Pkwy, Houston,
TX 77041, USA
Tel: 1-888-816-4808
Email: sales@raisecominc.com

Raisecom Technology Co., Ltd.

Copyright@1999-2018
All rights reserved
Technical information is subjected to
change without notice



Power consumption	≤ 73W	≤ 73W
Operating Temperature	-5~55°C	-5~55°C
Humidity	10~90% non-condensing	10~90% non-condensing
Physical Specification	1RU 444(W)mm x 360(D)mm x 44(H)mm Weight: 6.49kg	1RU 444(W)mm x 360(D)mm x 44(H)mm Weight: 6.49kg
Software license	○	●

Compliances >>

Standards & protocol

CE, UL, FCC compliance
 EMC Class A
 RoHS compliance
 IEEE802.3, 802.3u, 802.3z, 802.3-2008
 IEEE802.1AB, 802.1D, 802.1Q, 802.1p, 802.1ad, 802.1ax,
 IEEE802.3ah, 802.1ag,
 IEEE1588v2
 ITU-T G.8031, G.8032, ITU-T Y.1731
 MEF CE2.0 Compliance, MEF6, 9, 10, 11, 13, 14, 16, 17, 20, 31, 36
 RFC826, 768, 792, 793, 1112, 1195, 1771, 1772, 1997, 2131, 2132, 2236, 2328, 2362, 2439, 2710, 2763, 2966, 3031,
 3032, 3034, 3035, 3036, 3037, 3046, 3065, 3101, 3107, 3137, 3209, 3277, 3315, 3376, 3473, 3567, 3618, 3623, 3630,
 4090, 4182, 4271, 4273, 4377, 4378, 4379, 4443, 4447, 4448, 4541, 4605, 4649, 4760, 4761, 4762, 4893, 5036, 5187,
 5286, 5357, 5462, 5575, 5659, 5883, 6511, 7130

Ordering Information >>

Equipment

Part No.	Description
RAX721-C-2C24	Standard 1U, 19" standalone IP/MPLS pre-aggregation device, 2 x 100G/40G QSFP28/QSFP+ for uplink, 24 x 10G/1G SFP+/SFP for downlink, CONSOLE and SNMP ports for management -AC/D: dual hot-swappable AC power supply

International Headquarters

Raisecom Building, East-11, No.10 Xibeiwang East Road,
 Haidian District, Beijing, P.R.China, 100193
 Tel: +86 10 8288 3305
 Fax: +86 10 8288 3056
www.raisecom.com

U.S.A. Headquarters

Address: 6380 N Eldridge Pkwy, Houston,
 TX 77041, USA
 Tel: 1-888-816-4808
 Email: sales@raisecominc.com

Raisecom Technology Co., Ltd.

Copyright@1999-2018
 All rights reserved
 Technical information is subjected to
 change without notice



- AC/S: single hot-swappable AC power supply
- DC/D: dual hot-swappable DC power supply
- DC/S: single hot-swappable DC power supply
- AC_DC: one hot-swappable AC power supply and one hot-swappable DC power supply

RAX721-CL-2C24	Standard 1U, 19" standalone Ethernet pre-aggregation device, 2 x 100G/40G QSFP28/QSFP+ for uplink, 24 x 10G/1G SFP+/SFP for downlink, CONSOLE and SNMP ports for management. MPLS support (software license required)
	-AC/D: dual hot-swappable AC power supply
	-AC/S: single hot-swappable AC power supply
	-DC/D: dual hot-swappable DC power supply
	-DC/S: single hot-swappable DC power supply
	-AC_DC: one hot-swappable AC power supply and one hot-swappable DC power supply

Power Supplies

Part No.	Description
RPA1221-S-220S12	AC power supply module
RPD1241-48S12	DC power supply module

Perpetual Software License

Part No.	Description
SW Advanced license*	Software with full capabilities for RAX721-CL series. License per unit, Perpetual

* Features that will be available in future release

International Headquarters

Raisecom Building, East-11, No.10 Xibeiwang East Road,
Haidian District, Beijing, P.R.China, 100193
Tel: +86 10 8288 3305
Fax: +86 10 8288 3056
www.raisecom.com

U.S.A. Headquarters

Address: 6380 N Eldridge Pkwy, Houston,
TX 77041, USA
Tel: 1-888-816-4808
Email: sales@raisecominc.com

Raisecom Technology Co., Ltd.

Copyright@1999-2018
All rights reserved
Technical information is subjected to
change without notice