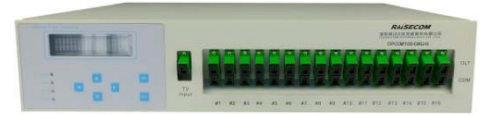


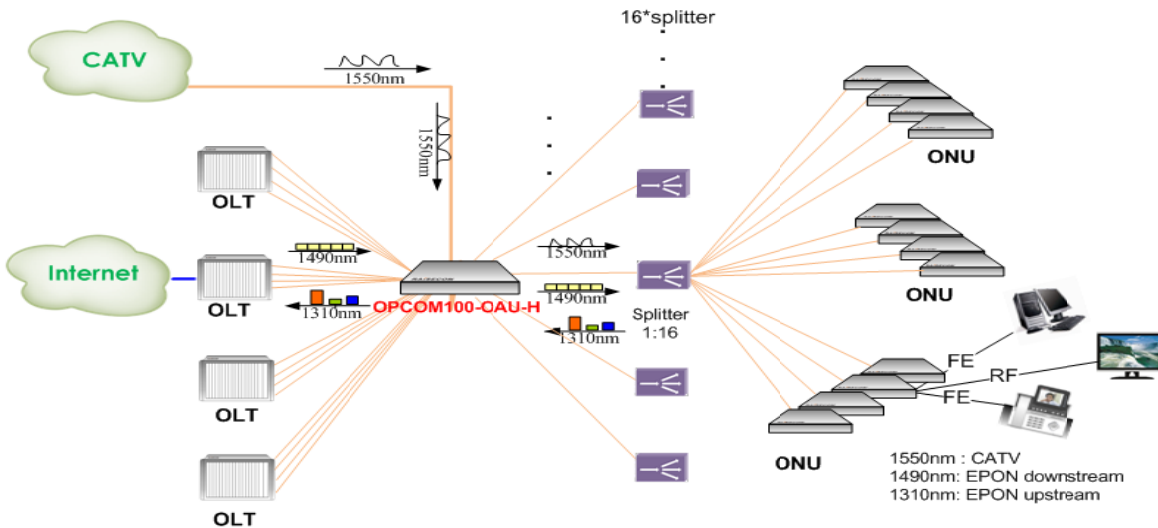
## OPCOM100-OAU-H Series FTTH EDFA

OPCOM100-OAU series FTTH are co-doped double-clad booster optical amplifier with high power output C-Band Er-Y, which adopts double-clad Er-Yb co-doped amplifying technology different from traditional EDFA. The electro-optical conversion efficiency is 10 times higher than traditional technology. APC (Automatic Power Control) and ATC (Automatic Temperature Control) circuit make output power of high stability and reliability. OPCOM100-OAU series FTTH EDFA can solely transport CATV analog and digital TV signals, and triple play network integration (CATV, DATA VOIP) is also accomplishable by cooperating with PON system.



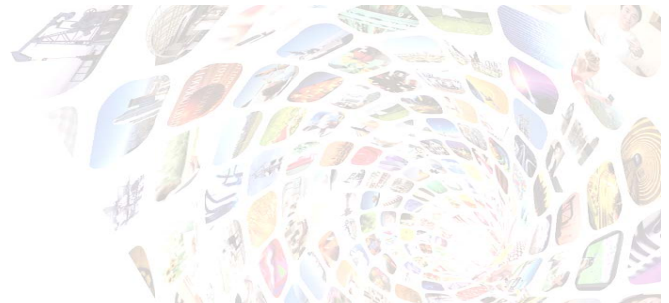
OPCOM100-OAU-H

### Typical Application



### Features

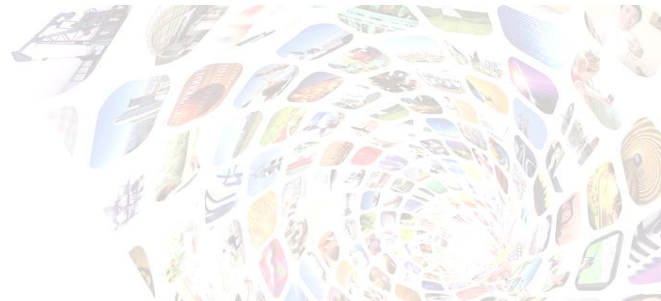
Application	Point to Multi-Point optical fiber amplifiers and dense Wavelength-Division Multiplexed communication system CATV optical fiber networks
Working wavelength	1540-1565nm
Output optical power	+17dBm × N, +20dBm × N
Functionality	Amplifying one optical signal on one mode Integrate into 1310nm, 1490nm, 1550nm WDM
High power output	Up to 6W output power, Support 2000~4000 optical nodes
Low noise figure	+5dBm, under 5.5dBm during input
ALS	Automatic Laser Shutdown prevents the laser from unnecessary transmitting and avoids harmful emission in case of a fiber cut



APC	Automatic Power Control allows a maintaining constant output power of the amplified optical signal
Er-Yb co-doped double-clad amplifier	Pump leaks processing technology
High stability and reliability	MTBF> 150,000 hours
Hot-swapping	Power supply board, network management board and fan board support hot-plugging
Intelligent temperature control system	Temperature control chip, heat dissipation and power consumption 30% lower than conventional products
Network management	Support remote network management
Working wavelength	Min. 1540nm; Max. 1565nm
Saturated output total power	Typical value 1.0W
Input power	-3~+10 dBm
Noise coefficient	Max. 6 dBm
Stability of output power	Typical value $\pm 0.05$ dBm; Max. $\pm 0.2$ dBm
Input/output isolation	Min 30dBm
1310nm/1490nm WDM insertion loss	Max. 1dBm
Input pump leakage	-35 dBm
Output pump leakage	-45 dBm
RL (Return loss)	Max. -45 dBm
PDG (Polarization Dependent Gain)	Max. 0.3 dBm
PMD (Polarization Mode Dispersion)	Max. 0.5 ps

## Specifications

Working Voltage	AC: 100~240V DC: -36~-72V
Power Consumption	$\leq 100W$
User Conditions	Operating temp: -5~50 °C Storage temp: -40~80 °C Humidity: 5~90% non-condensing
Dimensions	483(L) x 416(W) x 88(H) mm <sup>3</sup>
Weight	$\leq 7.1Kg$



## Ordering Information

OPCOM100-OAU-H EDFA with WDM support OLT butt joint welding.

**OPCOM100-OAU-H-17/16-SA-AC-W** Standard 2U stand-alon product is intergrated by splitter, optical amplifier, 1310/1490/1550 wavelength multiplexer.  
1\*1550nm analog Cable Television (CATV) signa optical interface, 16\*PON network data signal interface, 16\*COM (CATV+PON) multiplexing signal optical interface.  
Output power 17dBm, SC/APC square head/inclined hole, AC 220V power supply.

**OPCOM100-OAU-H-17/16-SA-DC-W** Standard 2U stand-alon product is intergrated by splitter, optical amplifier, 1310/1490/1550 wavelength multiplexer.  
1\*1550nm analog Cable Television (CATV) signa optical interface, 16\*PON network data signal interface, 16\* COM (CATV+PON) multiplexing signal optical interface.  
Output power 17dBm, SC/APC square head/inclined hole, DC -48V power supply.

**OPCOM100-OAU-H-20/4-SA-AC-W** Standard 2U stand-alon product is intergrated by splitter, optical amplifier, 1310/1490/1550 wavelength multiplexer.  
1\*1550nm analog Cable Television (CATV) signa optical interface, 4\*PON network data signal interface, 4\*COM (CATV+PON) multiplexing signal optical interface.  
Output power 20dBm, SC/APC square head/inclined hole, AC 220V power supply.

**OPCOM100-OAU-H-20/4-SA-DC-W** Standard 2U stand-alon product is intergrated by splitter, optical amplifier, 1310/1490/1550 wavelength multiplexer.  
1\*1550nm analog Cable Television (CATV) signa optical interface, 4\*PON network data signal interface, 4\*COM (CATV+PON) multiplexing signal optical interface.  
Output power 20dBm, SC/APC square head/inclined hole, AC -48V power supply.