



ISCOM HT803 ONU

▼ Introduction

The ISCOM HT803 is a pure data-type ONU product developed by Raisecom to meet the development of FTTx. It provides 1 EPON uplink optical interface, 4 FE downlink interfaces, which can meet the uplink/downlink bandwidth requirements in the current FTTB+LAN or FTTB scenario. Nowadays, one device shared by many users can reduce the difficulty in construction and maintenance cost, thus effectively improving AEPU. It adopts a plastic shell and external power supply featuring small size and elegant appearance, as shown below.



ISCOM HT803

▼ Features

- Low power consumption with full load power less than 5 W, using this product can save considerable electricity.
- Plastic shell, small size, and elegant appearance
- Support network management. It is flexible in use, low cost in management, and high in efficiency. Carriers can configure and manage the OLT remotely.

▼ Specifications

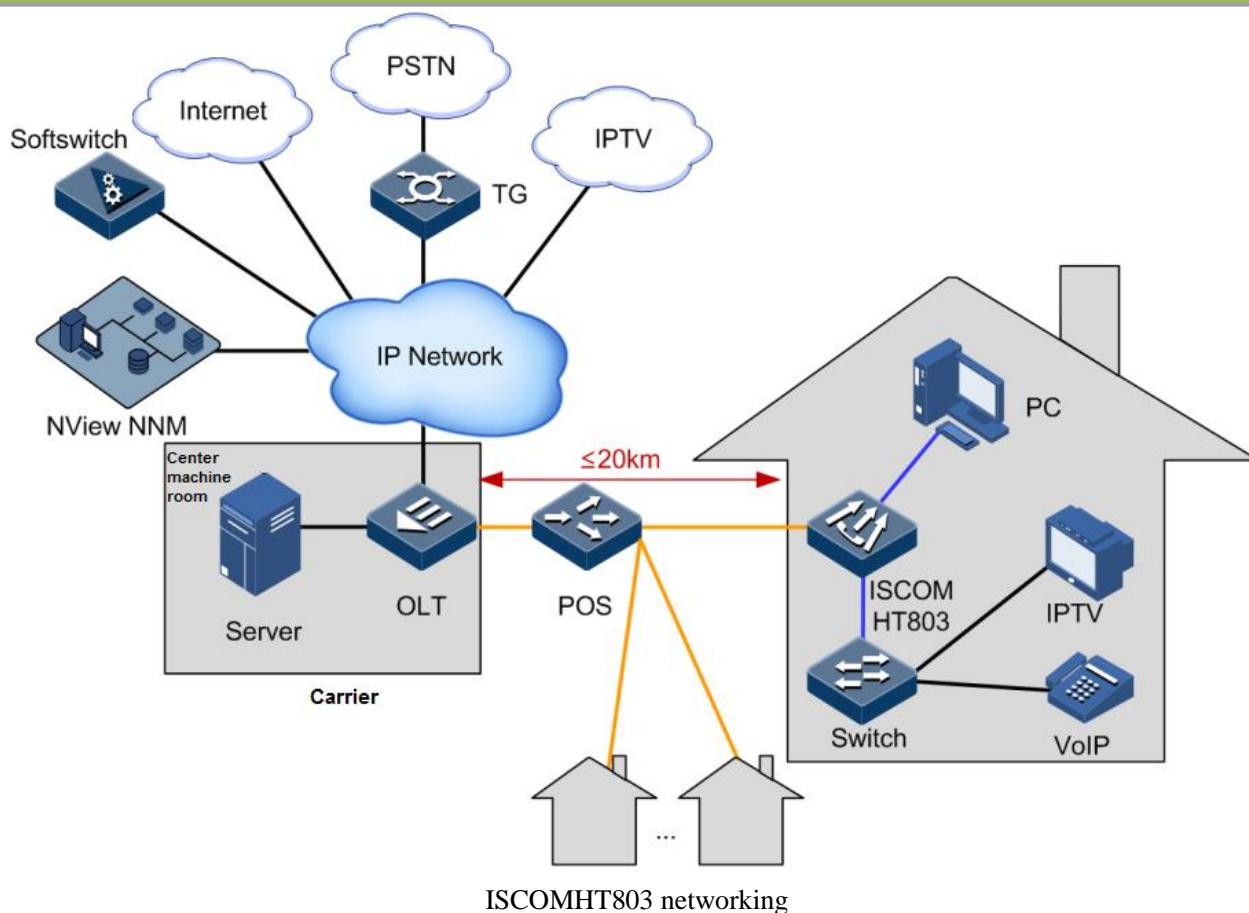
Hardware features	
Model	ISCOM HT803
Dimensions	164.2 mm (Length) × 119.3 mm (Width) × 33.4 mm (Height)



Weight	0.4 kg
Voltage	12 VDC/1 A
Power consumption	< 5 W
Working environment	Temperature: 0–40 °C Humidity: 10%–90% (non-condensing)
Storage environment	Storage environment: -25 to 75 °C Storage humidity: 10%–95% (non-condensing)
Dustproof level	IP20
Software features	
PON function	<ul style="list-style-type: none"> • Support two encryption methods: AES-128 and triple stirring • Support optical link DDM and shutting down the Tx power of the optical module.
Switching	<ul style="list-style-type: none"> • Support rate limiting on the interface. • Support a MAC address table capacity of 2K. • Support 4094 VLANs ranging from VLAN 1 to VLAN 4094. • Support configuring VLAN mode to transparent transmission, Tag, Trunk, and VLAN mapping. • Support interface loop detection between two UNIs on an ONU or UNIs on different ONUs. • Support port mirroring.
QoS & ACL	<ul style="list-style-type: none"> • Support 4 priority queues. • Support Layer 2, Layer 3, and Layer 4 traffic classification, priority mapping, and filtering rules.
Multicast	<ul style="list-style-type: none"> • Support transparent transmission of multicast packets, IGMP Snooping, and CTC controllable multicast mode. • Support the capacity of the multicast address table to be 256.
Interface indexes	
EPON interface	<ul style="list-style-type: none"> • Interface type: SC/PC • Transmission rate: 1.25 Gbit/s • Central wavelength: Tx in 1310nm, Rx in 1490nm • Tx optical power: 0 dBm–4 dBm • Maximum Rx sensitivity: -27 dBm • Overload optical power: -3 dBm
FE interface	<ul style="list-style-type: none"> • Interface type: RJ45 • Transmission rate: 10/100 Mbit/s auto-negotiation (FE) • Duplex mode: full/half mode auto-negotiation



▼ Typical applications



Networking description

- ISCOM HT803 connects the uplink to OLT through optical splitter and the downlink to LAN uplink device, or PC.

Ordering information

Model	Version	Description
ISCOM HT803	Z.00	1 EPON interface, 4 FE interfaces, SC/PC optical interface, 12 VDC/1 A external power adaptor