

## RC552-FE (Rev.B)

### 10/100M OAM Media Converter with 1:1 Uplink Protection

RC552-FE (Rev.B) is Raisecom's latest revised modular 10/100Mbps OAM media converter with 1:1 uplink protection.

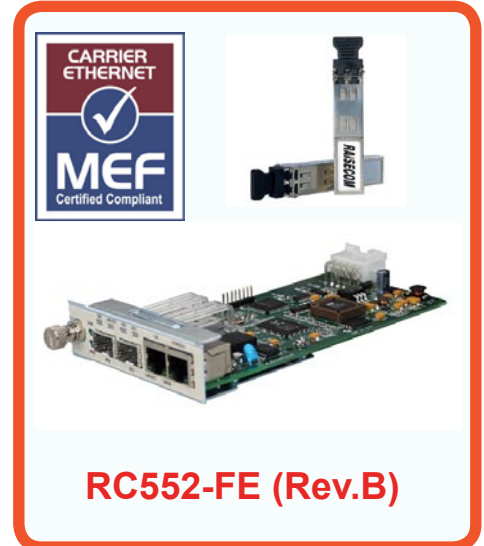
The media converter is equipped with a 10/100Mbps auto-negotiation UTP interface at client side and two SFP-based fiber interfaces at line side. The two uplink is able to work in a 1:1 protected way that the traffic will be switch to the secondary line for transmission whenever the primary line is broken down.

RC552-FE(Rev.B) can either be deployed in a pair or connected directly to an aggregation switch with fiber ports. IEEE802.3ah OAM

makes the media converter be easily monitored and managed. The media converter works in Raisecom RC001/002 series chassis. With SNMP agent card in the chassis, a pair of RC552-FE(Rev.B) can be monitored and network managed on the GUI of Raisecom's NView NNM system. RC552-FE(Rev.B) can also be assigned with an independent IP address for web-based management, which provides a easier way for the users to log in the media converter locally or remotely for monitoring, configuration change and fault removing.

#### Feature

|                       |  |
|-----------------------|--|
| Client Side Port      | 10/100Mbps auto-negotiation<br>RJ-45 connector   |
| Line Side Port        | 2 SFP slots for 100M fiber optic SFP, LC connector<br>1:1 uplink protection  |
| MTU                   | 9000 Bytes   |
| Transmission distance | Dual-strand fiber: up to 100km<br>Single strand fiber: up to 60km  |
| Rate Limit            | N x 128Kps   |
| VLAN & Q-in-Q         | VLAN tagging and untagging<br>Outer VLAN tagging and untagging   |
| Fiber Port ALS        | Support  |
| Fault Pass Through    | 1. from Line side to Client side<br>2. from Client side to Line side   |
| IEEE802.3ah OAM       | OAM discovery<br>MIB variable retrieval<br>Dying Gasp (by indicator, status change and alarm report)<br>Remote loopback  |
| Loopback Test         | Standard OAM loopback with MAC swap configuration<br>Local and remote internal loopback test   |
| SFP Management        | SFP information collection<br>SFP digital diagnostics  |
| Remote Management     | When working in pair, remote module can be fully monitored and managed through the local module working in OAM master mode via OAM.  |
| Web-based Management  | Local and remote inband web-based management for single module, including firmware upgrade   |
| GUI-based Management  | Through SNMP agent module RC001-NMS1 and RC002-NMS1, a pair of the media converters can be monitored and managed on the GUI of Raisecom NView NNM system. RC552-FE(B) that is used independently and not running in a network manageable chassis can also be monitored on NView platform using its independent IP address. |

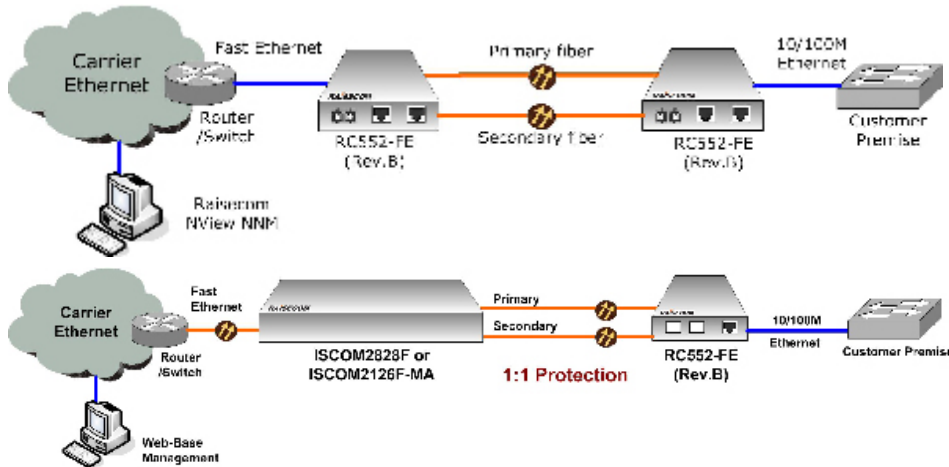


RC552-FE (Rev.B)

#### Specification

|                   |  |
|-------------------|--|
| Port              | Client Side<br>1*10/100BaseTX (RJ-45)<br>1*10/100BaseTx Console port (RJ-45)<br>Line side<br>2*100Base-X (SFP)   |
| Indicators        | PWR for power supply<br>RFI for dying gasp indication<br>100M for electrical port<br>LNK/ACT for electrical port<br>LNK/ACT for optical port<br>PRI for primary fiber link<br>SEC for secondary fiber link<br>OAM for OAM connection |
| Dimension         | 76(W)*170(D)*25(H)mm   |
| Weight            | 0.5kg  |
| Power supply      | power supplied by chassis<br>AC: 90~264V, 47~63Hz<br>DC: 36~75V  |
| Power consumption | 4W   |
| Working ambience  | Temp: -5~60 centigrade<br>RH: 5~90% non-condensing   |
| Storage ambience  | Temp: -25~85 centigrade<br>RH: 20~90% non-condensing   |
| Safety compliance | CE marking<br>FCC Class A  |

## Typical Application

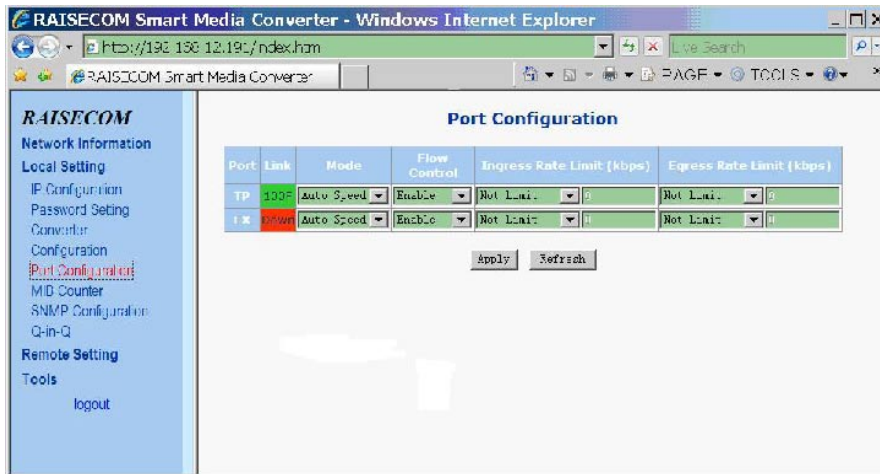


## Compliance

|      |  |
|------|--|
| IEEE | IEEE802.3-2002<br>IEEE802.3i 10Base-T<br>IEEE802.3u 100Base-TX<br>IEEE802.3x<br>IEEE802.3ah-2004 |
| MEF  | EPL, MEF 9, 14   |



## Web-Based Management



## Ordering Information

| Part Number      | Description  |
|------------------|--|
| RC552-FE (Rev.B) | Modular 10/100Mbps OAM media converter with 1:1 uplink protection, one 10/100M auto-negotiation FE port at Client side, two 100M SFP-based fiber uplink ports at Line side with 1:1 protection, inband web-based management via independent IP address, monitored and managed on the GUI of NView NNM system |